

THE
SELENE & EASTERLY
GULF FRONT CONDOMINIUMS





INTRODUCING THE SELENE AND EASTERLY CONDOMINIUMS

There were several early priorities established for the project. The Selene & Easterly, opposite the Beach Club, were to contribute to making the most beautiful possible Gulf front plaza. The perimeters of both buildings were to take the greatest possible advantage of views and natural light, while maintaining the privacy of the residences. Outdoor spaces were to be maximized and public rooms were to open prominently onto these outdoor spaces. The garages were to be proximate and convenient without being visible from the plaza. The buildings were to work together as a pair but have distinct characters and take advantage of different orientations to the Gulf and the town.

Glass was maximized to take advantage of Gulf views, but the buildings had to conform to those solid qualities that have long distinguished Alys Beach. Every room in each residence has large oversized windows and single-lite bifold doors. Every living room and master bedroom has access to generous porches and balconies. The Selene has long, 40-foot, west-facing porches. The Easterly has corner porches with broadly splayed views to both the Gulf and the town. Its living rooms also open onto balconies lined by operable doors. West light is controlled but provides views across the plaza and through the east wing of the Beach Club to the coast beyond it. The Selene & Easterly will be in the middle of a fun, active setting and will still enjoy privacy when it is desired.

Scott Merrill
Founder
Merrill Pastor and Colgan Architects

**ORAL REPRESENTATIONS CANNOT BE RELIED UPON AS
CORRECTLY STATING REPRESENTATIONS OF THE DEVELOPER.
FOR CORRECT REPRESENTATIONS, MAKE REFERENCE TO
THIS BROCHURE AND TO THE DOCUMENTS REQUIRED BY
SECTION 718.503, FLORIDA STATUTES, TO BE FURNISHED BY
A DEVELOPER TO A BUYER OR LESSEE.**

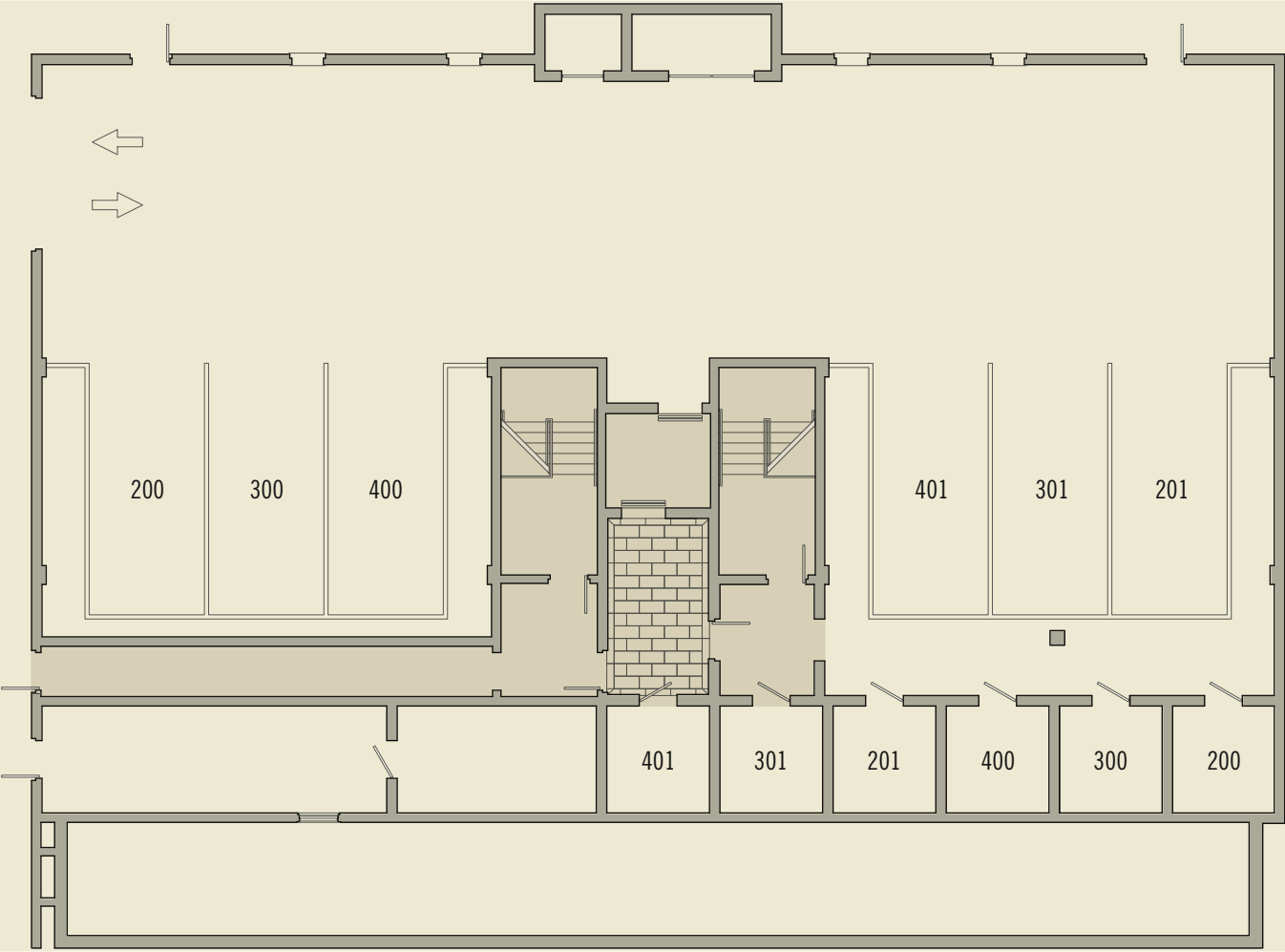
THE
SELENE
A GULF FRONT CONDOMINIUM

Named for the Greek mythological goddess who drove the chariot of the moon across the heavens to usher in the dusk and night skies, The Selene will offer the most expansive of south-facing Gulf views. The Selene will feature three 3-bedroom residences and three 4-bedroom residences with each having extended views overlooking the Gulf of Mexico, the Plaza, and Beach Club.

Alongside her sister building, The Easterly, The Selene will anchor the southernmost end of the Alys Beach Town Center with the Plaza and Beach Club to her immediate west. Wide, open floorplans and exceptionally tall ceilings framed by expanses of glass windows and doors will allow for fully integrated indoor/outdoor living. The Selene is designed to take full advantage of its Gulf frontage and proximity to Alys Beach's most prestigious homeowner amenity, the Plaza and Beach Club.

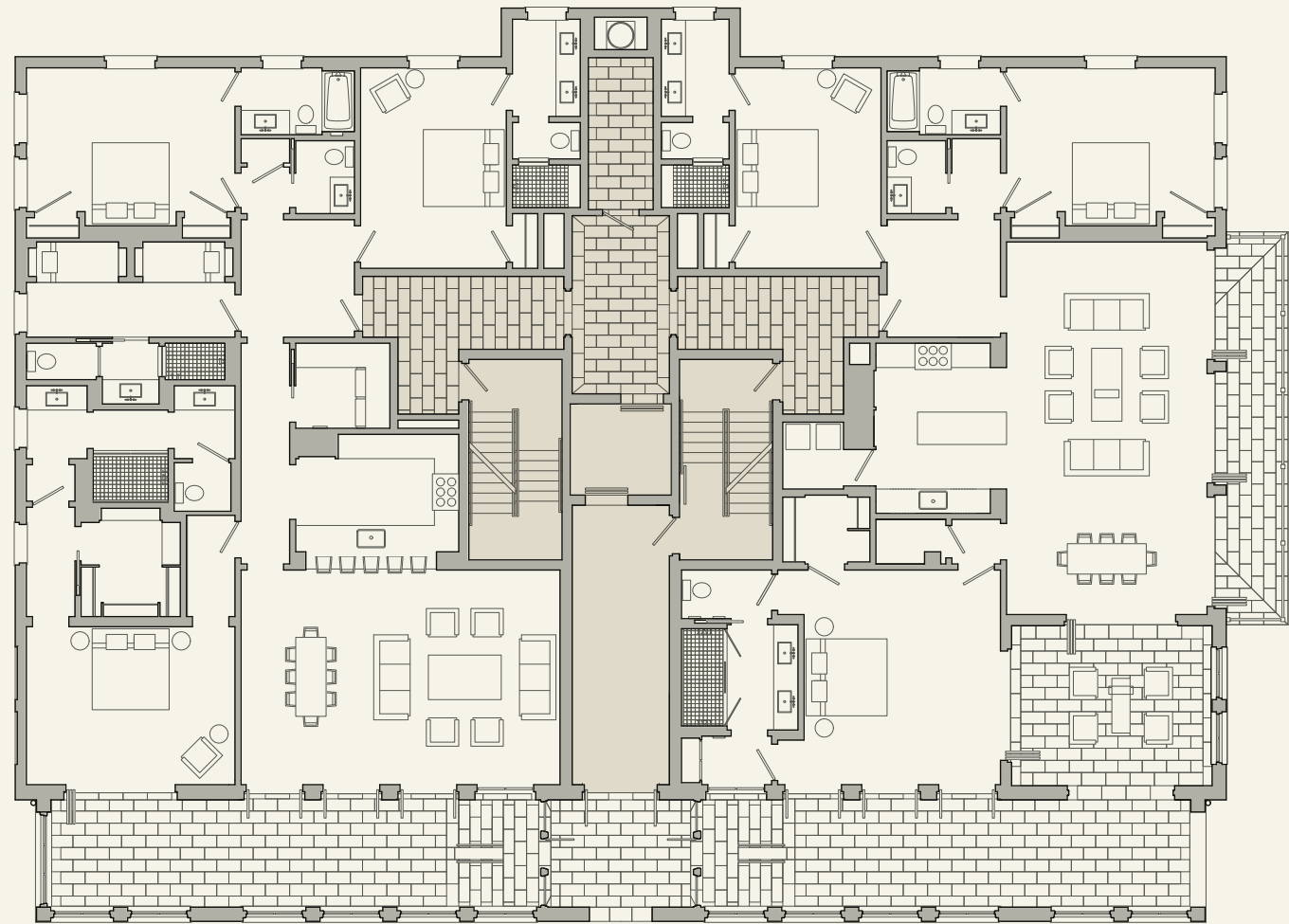


THE
SELENE
A GULF FRONT CONDOMINIUM



GROUND FLOOR

THE
SELENE
A GULF FRONT CONDOMINIUM



RESIDENCE 200

RESIDENCE 201

SECOND FLOOR

THE
SELENE
A GULF FRONT CONDOMINIUM

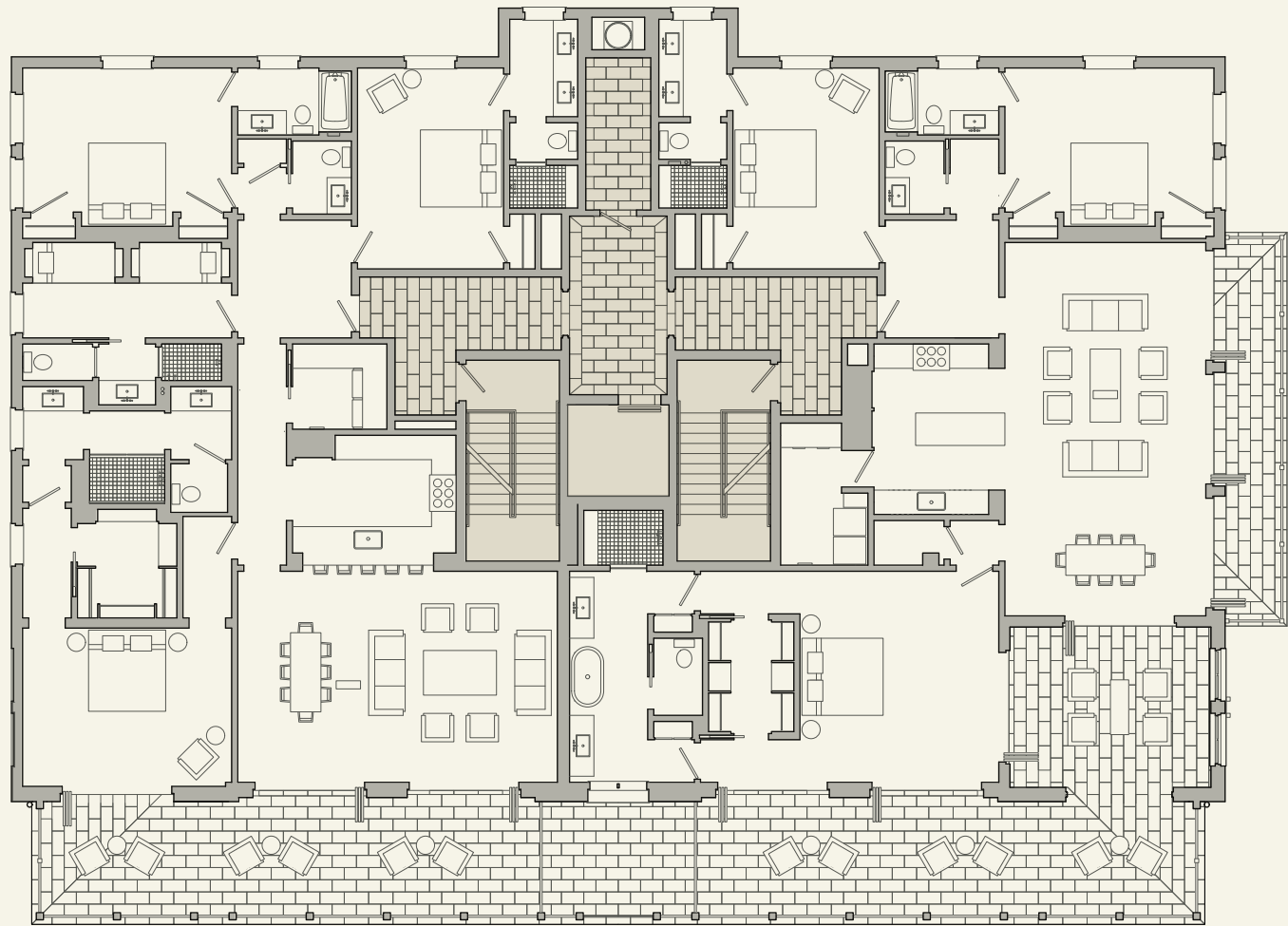


RESIDENCE 300

RESIDENCE 301

THIRD FLOOR

THE
SELENE
A GULF FRONT CONDOMINIUM



RESIDENCE 400

RESIDENCE 401

FOURTH FLOOR

THE
SELENE
A GULF FRONT CONDOMINIUM



WEST ELEVATION

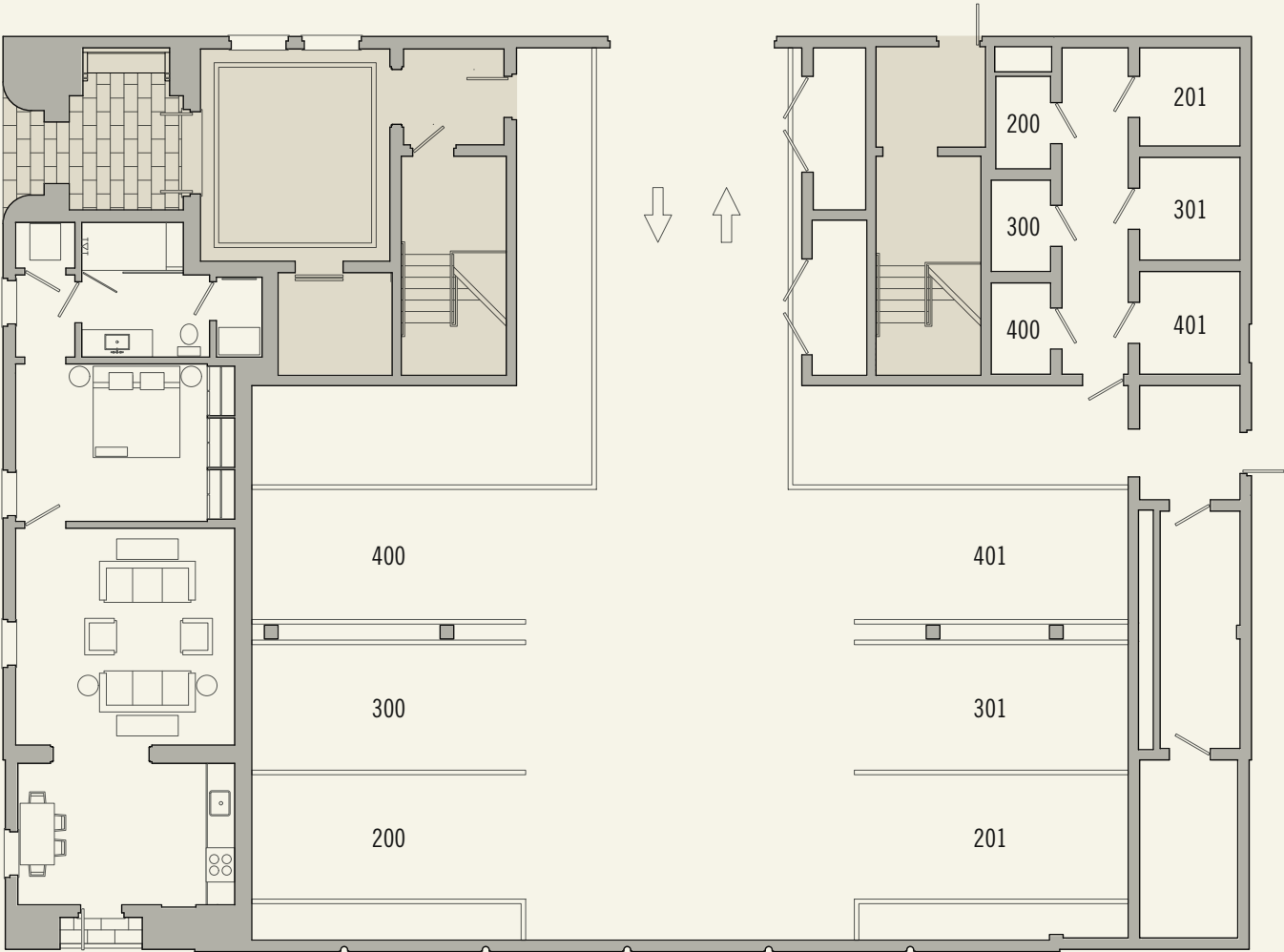
THE
EASTERLY
A GULF FRONT CONDOMINIUM

Derived from the name of Eos, sister to Selene in Greek Mythology and the bearer of the warm, morning light from the east at each dawn, The Easterly shares the broad views of the Gulf of Mexico and overlooks the Plaza and Beach Club at the southern coastline of Alys Beach. With these incredible views of beach-front and social activity, The Easterly is designed to capitalize on the indoor/outdoor lifestyle while maintaining the option for full privacy.

Airy and spacious floorplans include seven total one- and three-bedroom with bunk room residences. Like her sister building, The Easterly offers extensive south and westerly views, and proximity to Alys Beach's most exquisite homeowner-exclusive amenity, the Plaza and Beach Club. Broad spans of glass windows and doors paired with sweeping balconies bring the light and the views indoors, and opening features allow living spaces to extend to the outdoors.



THE
EASTERLY
A GULF FRONT CONDOMINIUM



RESIDENCE 100

GROUND FLOOR

THE
EASTERLY
A GULF FRONT CONDOMINIUM

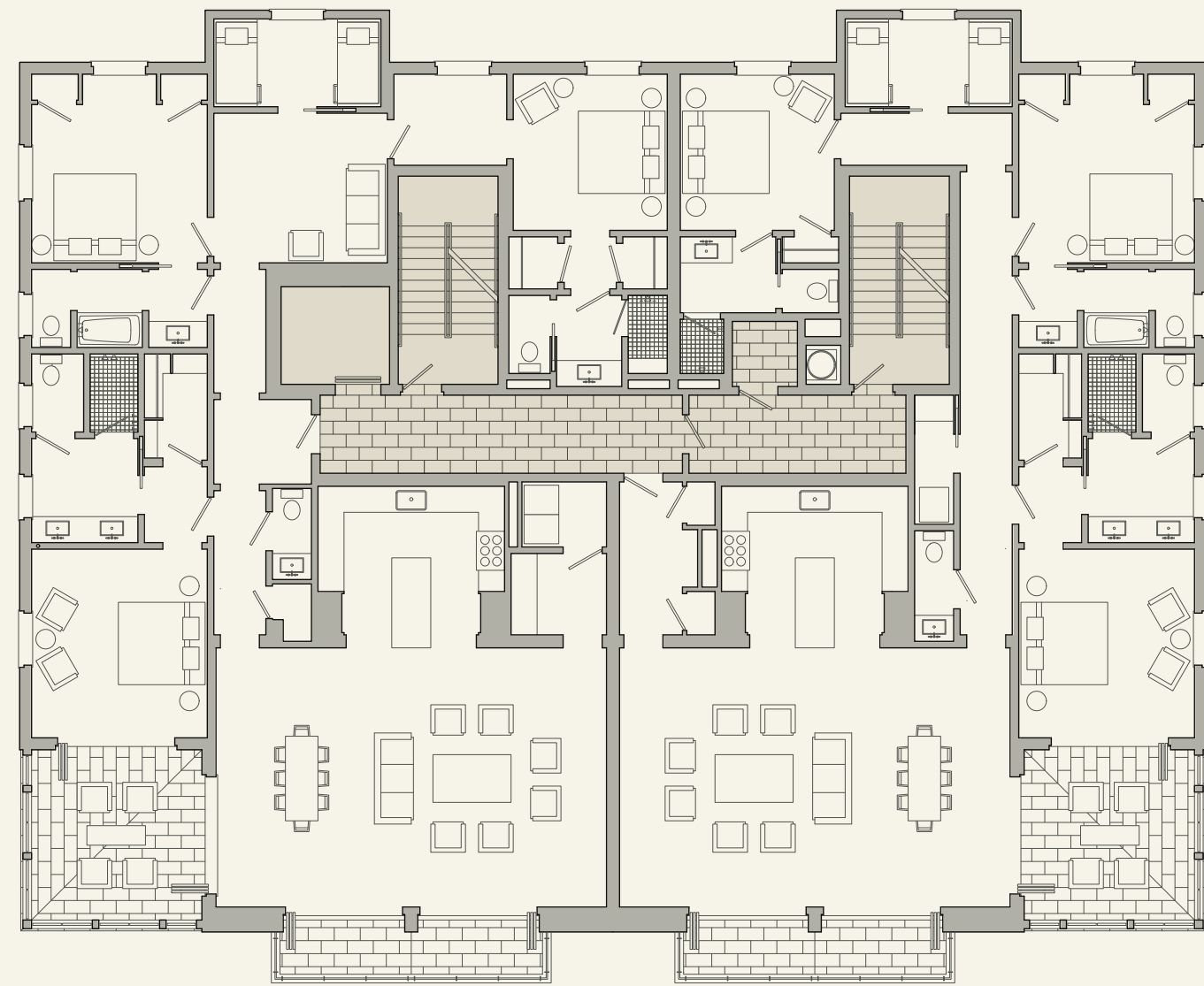


RESIDENCE 200

RESIDENCE 201

SECOND FLOOR

THE
EASTERLY
A GULF FRONT CONDOMINIUM

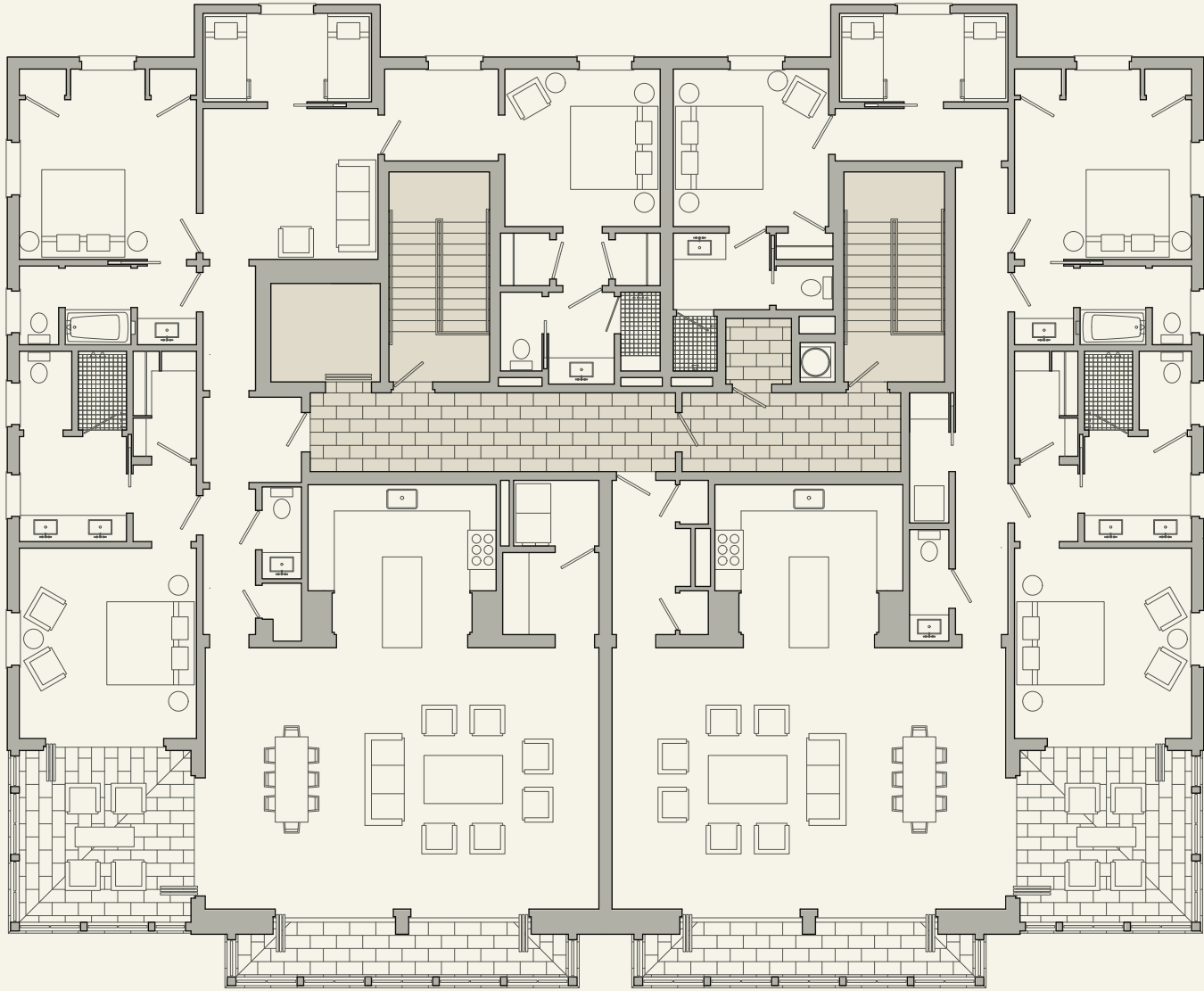


RESIDENCE 300

RESIDENCE 301

THIRD FLOOR

THE
EASTERLY
A GULF FRONT CONDOMINIUM

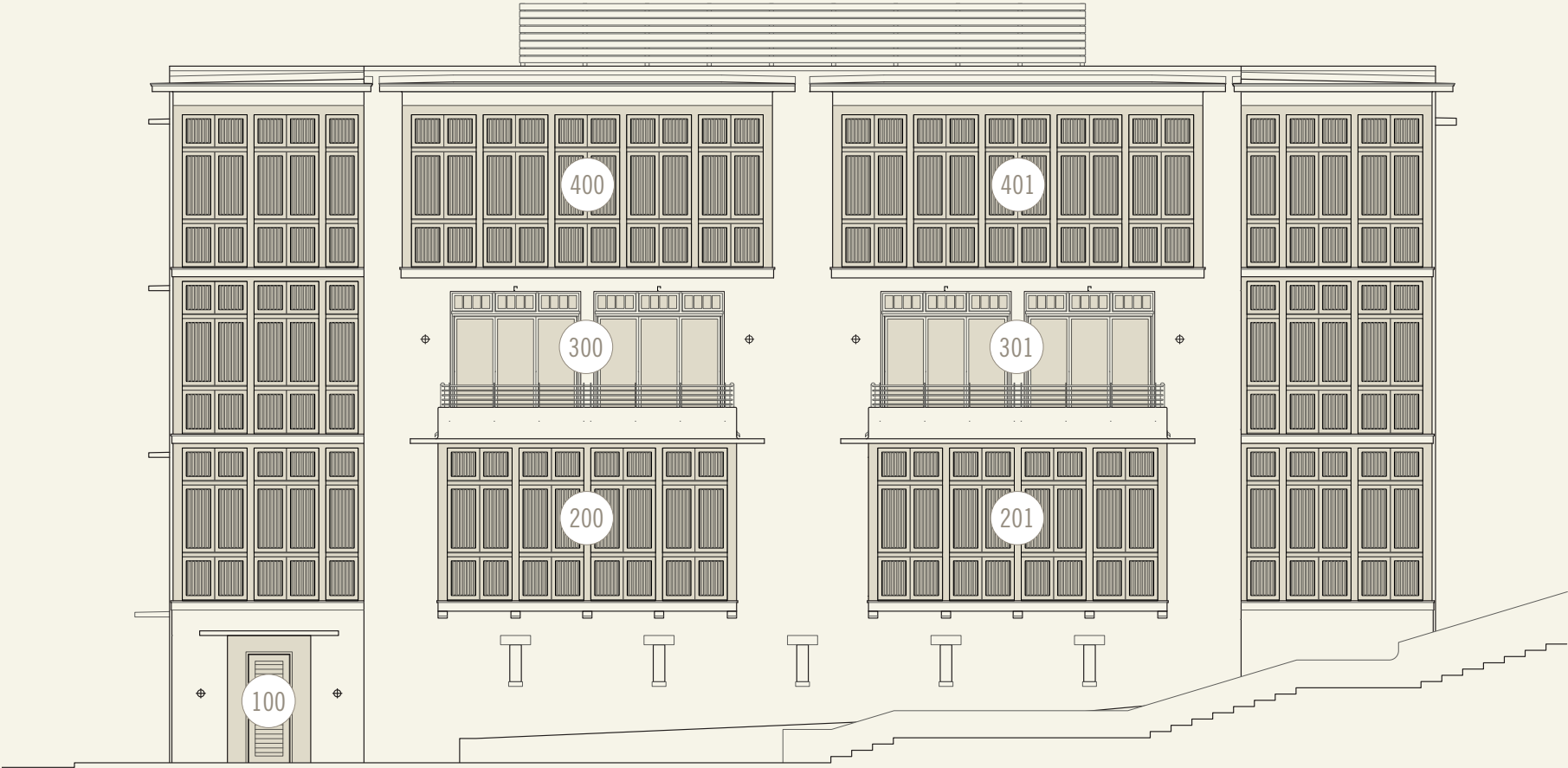


RESIDENCE 400

RESIDENCE 401

FOURTH FLOOR

THE
EASTERLY
A GULF FRONT CONDOMINIUM

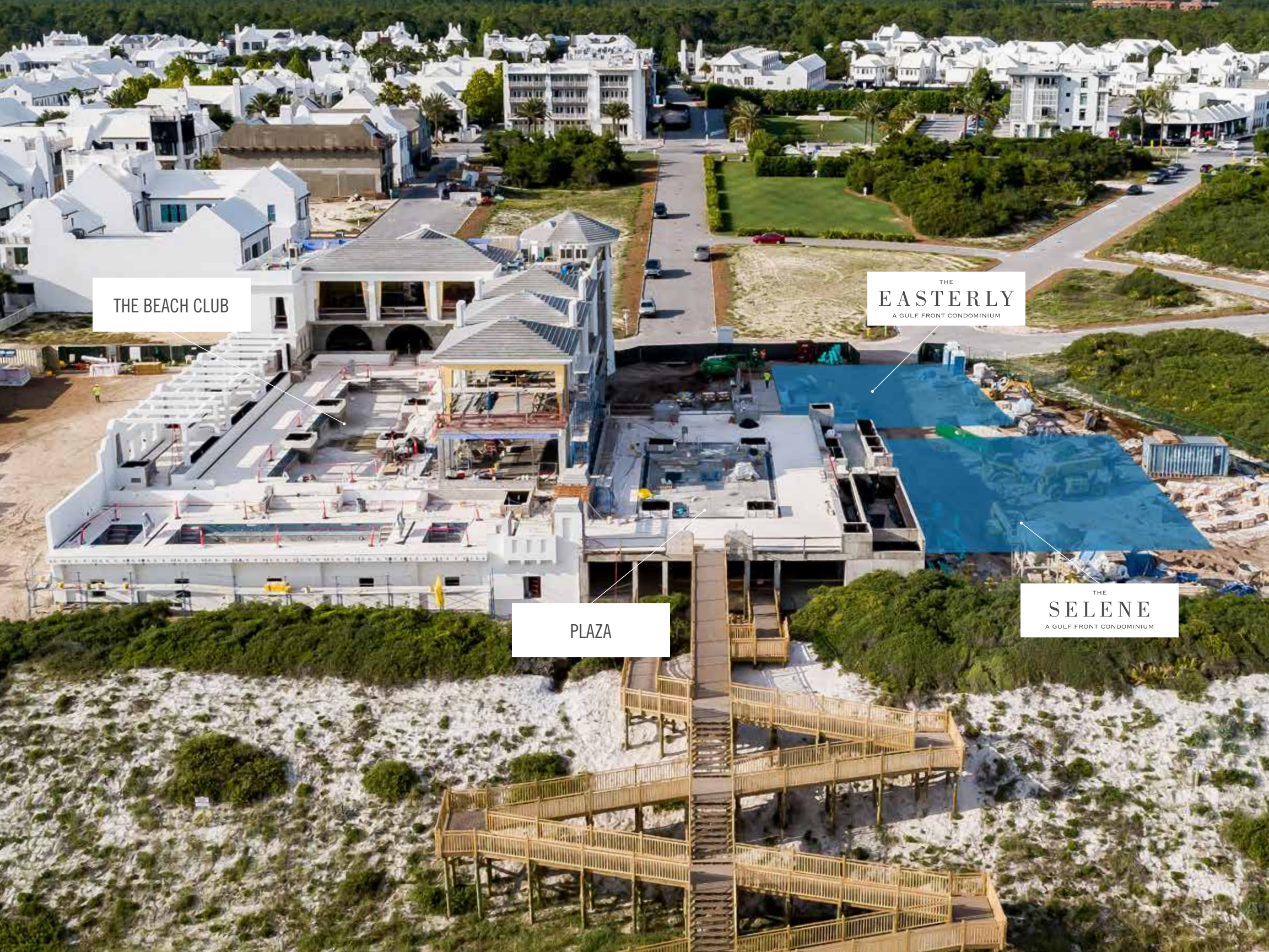


WEST ELEVATION



AERIAL VIEW OF GULF FRONT PLAZA





THE BEACH CLUB

THE
EASTERLY
A GULF FRONT CONDOMINIUM

PLAZA

THE
SELENE
A GULF FRONT CONDOMINIUM

THE
SELENE & EASTERLY
GULF FRONT CONDOMINIUMS



ALYSBEACH.COM | FACEBOOK.COM/ALYSBEACHFL

The design and construction of The Selene and Easterly Condominiums at Alys Beach, are ongoing processes. The master plan, floor plans, features, and prices may change without notice in accordance with the condominium documents.

Illustrations are artist's depictions only and may differ from completed improvements. Room dimensions and square footages are approximate. This is not an offer to sell real property. (For that, please visit our local sales office.)

Void where prohibited by law. Equal Housing Opportunity. No Federal Agency has judged the merits or value, if any, of this property. Alys Beach is a trademark of EBSCO Industries, Inc. © 2020