



PHASE 4
GG BLOCK





INTRODUCING THE NEWEST PHASE OF DEVELOPMENT AT ALYS BEACH

The Phase 4, GG Block section of Alys Beach will be a neighborhood where nature dominates the scene and weaves its way through a varied collection of picturesque homes organized around an expansive wetland park and nature preserve. This is where the town transitions into the forest and connects to the winding boardwalk weaving through the pine woodland. This is where you can find shade, seasonal color, and a restful retreat from the heat of the afternoon sun.

The collection of cottage homes and gardens embraces the adjacent nature preserve and wetland park. The neighborhood streetscape is characterized by a reflective canvas of undulating white garden walls that open into landscaped courtyards and gardens — all set against a variegated assortment of the green and gold textures of the rugged natural setting. A neighborhood that is a bit more “country” than “town.”

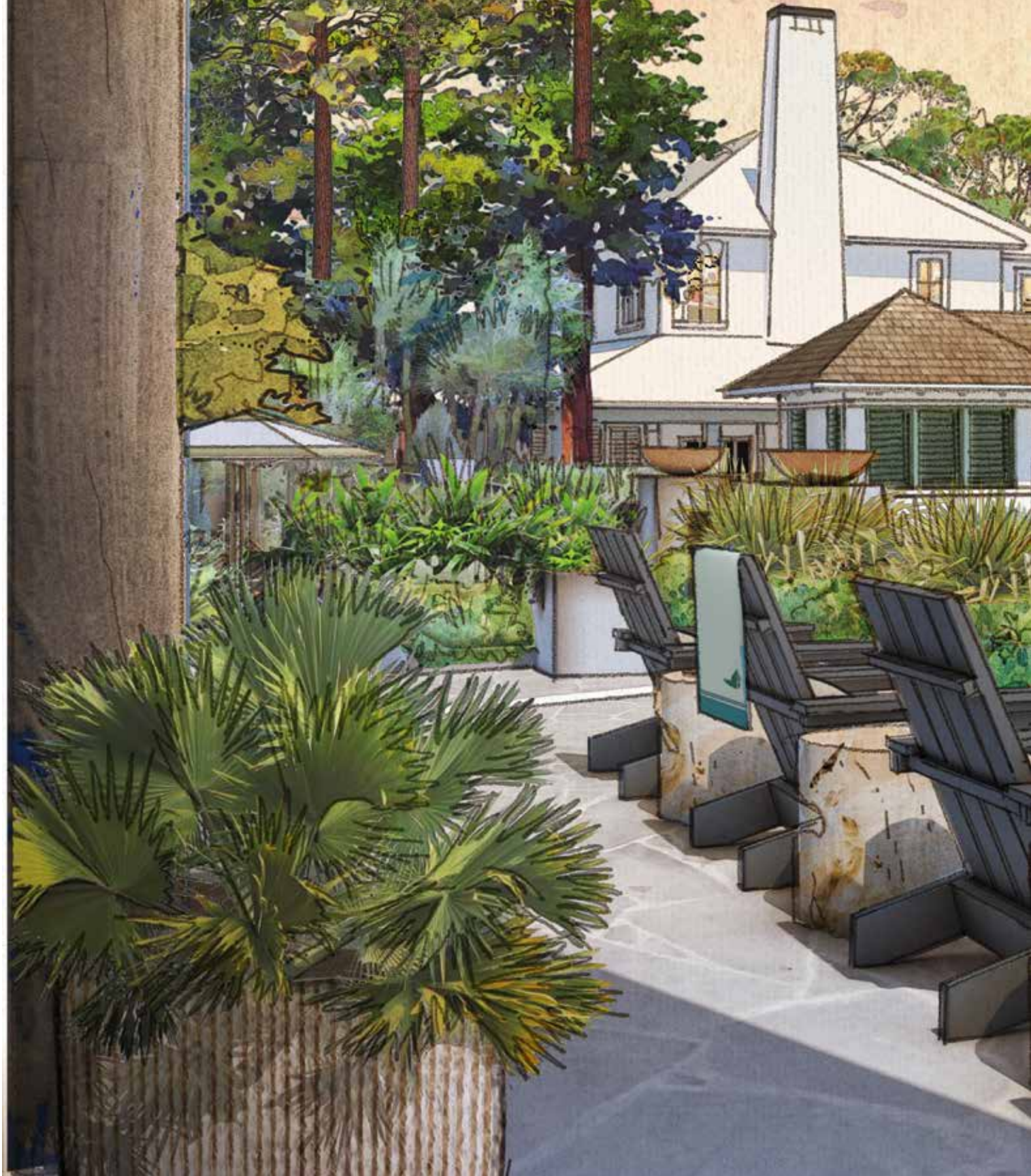
Tim Slattery
Principal, AIA
Hart Howerton

ORAL REPRESENTATIONS CANNOT BE RELIED UPON AS CORRECTLY STATING REPRESENTATIONS OF THE DEVELOPER. FOR CORRECT REPRESENTATIONS, MAKE REFERENCE TO THIS BROCHURE AND TO THE DOCUMENTS REQUIRED BY SECTION 718.503, FLORIDA STATUTES, TO BE FURNISHED BY A DEVELOPER TO A BUYER OR LESSEE.

CONNECTING THE BEACH AND THE NATURE PRESERVE

The Silva amenity (Silva is Latin for “woods”), will complete the connection between the beach and the Nature Preserve, paying special respect to the natural resources. Comprised of a central event lawn, an enclosed pavilion opening onto the lawn, pool, and covered terrace with bar and café. This amenity, easily accessible to the full community and tying seamlessly into its natural setting, will provide a full, new gathering space, a new and fully realized space connecting our community with each other, with family and friends, and with our uniquely precious natural landscape.

ORAL REPRESENTATIONS CANNOT BE RELIED UPON AS CORRECTLY STATING REPRESENTATIONS OF THE DEVELOPER. FOR CORRECT REPRESENTATIONS, MAKE REFERENCE TO THIS BROCHURE AND TO THE DOCUMENTS REQUIRED BY SECTION 718.503, FLORIDA STATUTES, TO BE FURNISHED BY A DEVELOPER TO A BUYER OR LESSEE.







THE SILVA POOL AMENITY



THE SILVA BAR & RESTAURANT

A GRACEFUL ARRANGEMENT OF LANDSCAPE AND ARCHITECTURE

These homes are connected to Nature. The house and grounds are designed together, each interconnected and balanced. An open arrangement of indoor spaces extends to outdoor garden rooms and courtyards covered by trellises and arbors that screen and shade from the sun. Outdoor gathering places for dining or lounging, screened garden rooms, and carefully located pools maximize the full use and enjoyment of each property. The courtyard and garden scale landscape are selected to naturally transition into the larger landscape of coastal pine, palmetto, oak and scrub. The interior design selections bring the natural palette indoors with soft neutral tones of greens, blues and silvery grays. All elements are cohesively designed to respect and integrate within this unique, natural setting of Alys Beach.

This neighborhood, like all of Alys, will get better with time. As the landscape matures and grows, the homes will settle in gracefully and become another lovely spot for a morning jog, afternoon bike ride or evening stroll around the Town.



PHASE 4 LIFESTYLE





**PHASE 4
GG BLOCK**



AREA OF DETAIL



ALYSBEACH.COM | FACEBOOK.COM/ALYSBEACHFL

The design and construction of The Silva Phase 4 at Alys Beach are ongoing processes. The master plan, floor plans, features, and prices may change without notice in accordance with the residence documents. Illustrations are artist's depictions only and may differ from completed improvements. Room dimensions and square footages are approximate. This is not an offer to sell real property. (For that, please visit our local sales office.) Void where prohibited by law. Prices may change without notice in accordance with the Alys Beach Neighborhood Association Documents. Equal Housing Opportunity. No Federal Agency has judged the merits or value, if any, of this property. Alys Beach is a trademark of EBSCO Industries, Inc. © 2025.