

SOMERSET HOMES
GG - 7



HART HOWERTON, ARCHITECTS



SOMERSET HOMES

GG-7

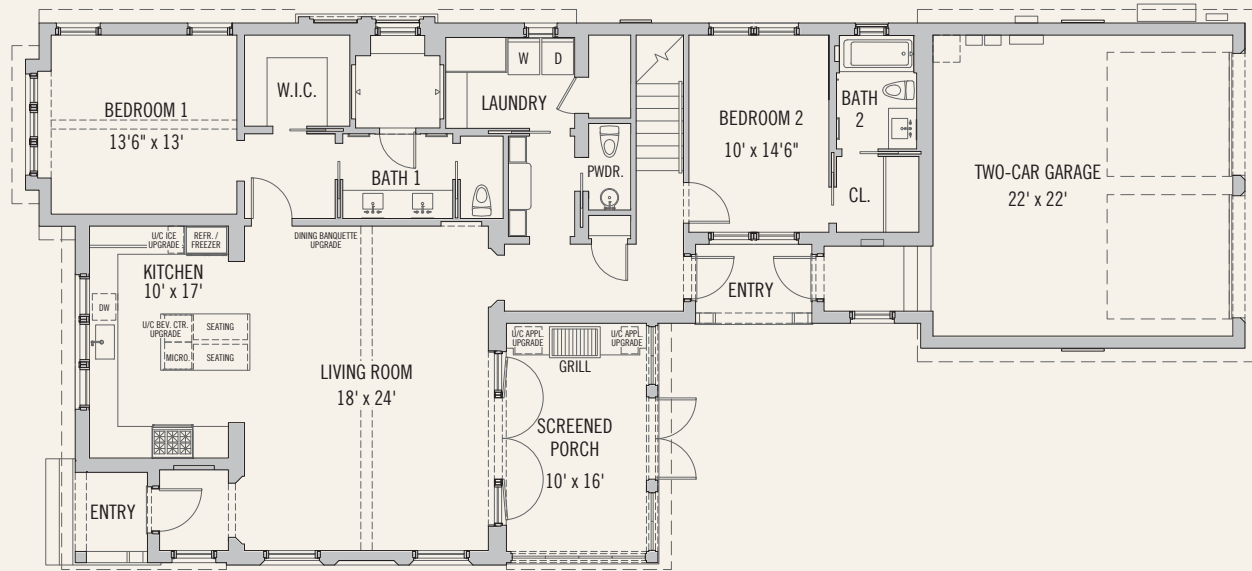
4 BEDROOMS

4 ½ BATHS

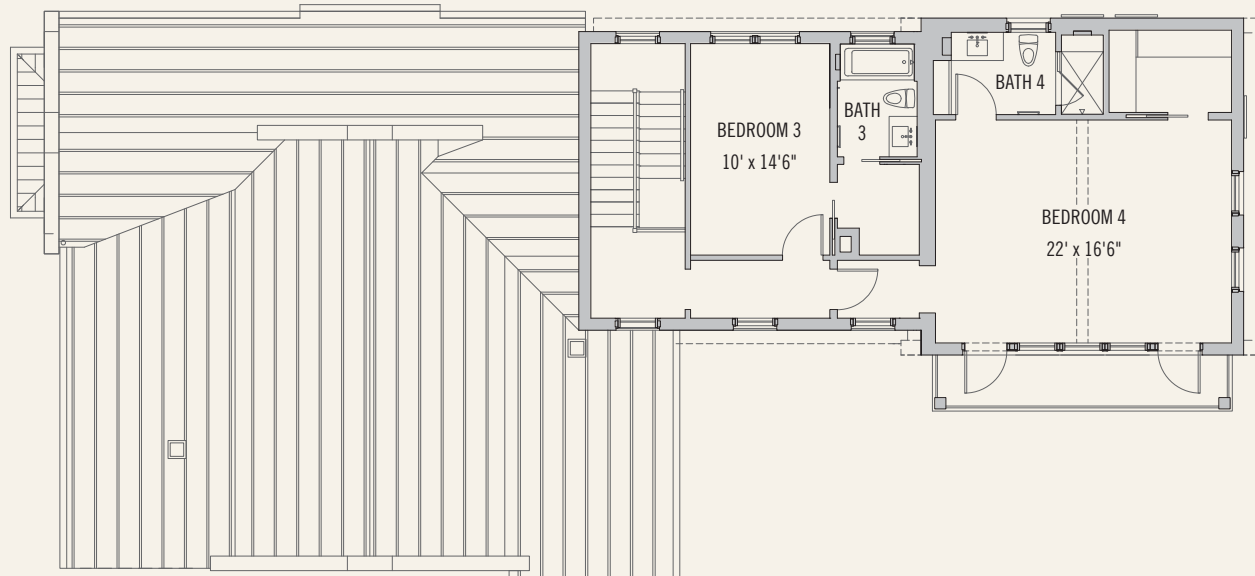
Conditioned Space:	2,949 sq. ft.
Unconditioned Space:	368 sq. ft.
Garage Space:	620 sq. ft.



GG-7 Homesite Location



FIRST FLOOR



SECOND FLOOR

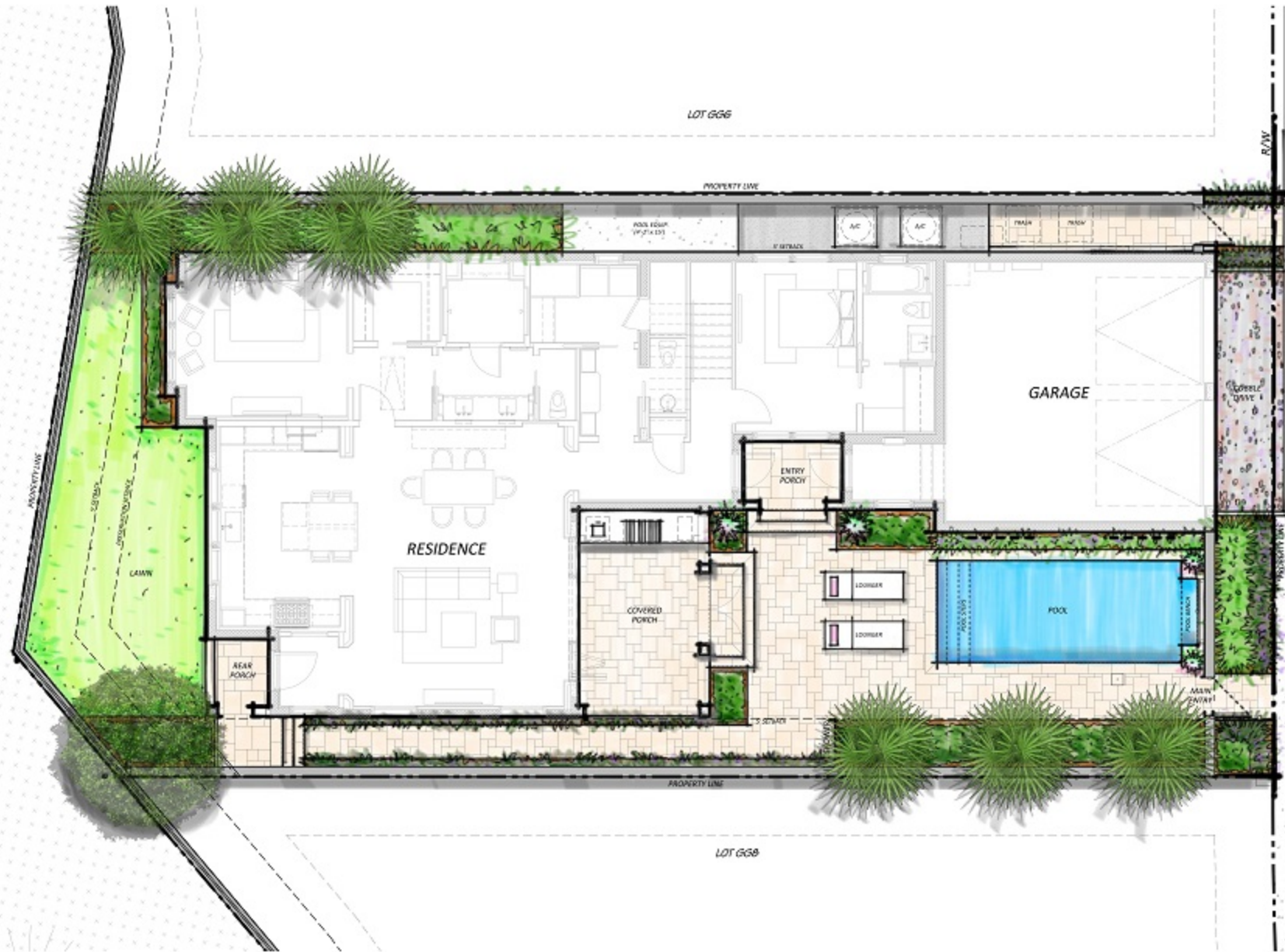


ALYSBEACH.COM | FACEBOOK.COM/ALYSBEACHFL

The design and construction of The Garden District at Alys Beach, are ongoing processes. The master plan, floor plans, features, and prices may change without notice in accordance with the condominium documents. Illustrations are artist's depictions only and may differ from completed improvements. Room dimensions and square footages are approximate. This is not an offer to sell real property. (For that, please visit our local sales office.)

Void where prohibited by law. Equal Housing Opportunity. No Federal Agency has judged the merits or value, if any, of this property. Alys Beach is a trademark of EBSCO Industries, Inc. © 2023

WETLAND PRESERVE



WHITTEN WAY

NEIGHBORHOOD SIDEWALK

PREPARED BY:
THE PATRICK HODGES LAND STUDIO
 PLANNING • DESIGN • LANDSCAPE ARCHITECTURE

Post Office Box 611822
 Riverway Beach, FL 32261
 Phone: 904.526.1945
 Email: phodges@patrickhodes.com
 LICENSE NO. LA000001



DRAWING SCALE AND NORTH ARROW

SCALE: 1/4" = 1'-0"

NORTH

PREPARED FOR:
EBSCO GULF COAST DEVELOPMENT INC.
 BOX 81-8208 COUNTY HIGHWAY 28A ALYS BEACH, FLORIDA 32461-8208

Brian Spence - Vice President of Residential Construction
 FL 0001 023087 - a State of Florida Licensed Certified General Contractor
 office: 904.219.0306
 12 Elder Beach Road, Alys Beach, FL 32461



ALYS BEACH - LOT GG7
SITE PLAN - HARDSCAPE

THE BACKYARD @ ALYS BEACH
 WALTON COUNTY, FLORIDA

DESIGNED BY HODGES
 CREATED BY CHS
 REVIEWED BY PHA
 DRAWING #
 DATE: DEC 20, 2022

L101